

Inter-Flux

The Sacristy Gallery

November 6, 2020 – January 10, 2021

In their exhibition *Inter-Flux*, artists Mayumi Lake and Holly Cahill explore the concepts of change and impermanence. Both artists embrace ambiguity in their work, creating objects that slide easily between abstraction, representation, fine art and craft. They examine how we use processes like sewing, painting and photography to make sense of an uncertain world, to give shape to the otherwise formless and to capture fleeting moments in our lives. In addition to examining the role of flux, the artists look at the impact that cultural and personal mythologies have on how we interpret the world.

As a Japanese immigrant who has been living in the U.S for over 20 years, Mayumi Lake makes objects that float between states: East and West, longing and hope, memories and oblivion and past and future. In Japan, an awareness of life's temporary nature is called "Mono-No-Aware". This acknowledgment of impermanence drives Lake to preserve the past, seeking to archive the forgotten and the obsolete. In her *Unison* series, Lake explores the ancient Japanese tradition of Housage (pronounced Housou-gae) flowers. In times of political chaos and upheaval, people filled sacred prayer sites with bright, boldly-colored flowers which they believed would calm their despair and bloom for them in the afterlife. *Unison* is an ongoing sculptural-photographic series that offers interpretations of these mythic and heavenly flowers. She constructs these blossoms using motifs taken from vintage kimonos. The use of the kimono goes beyond being just a reference to Lake's Japanese heritage; it signifies a dying cultural tradition. Indeed, the works from *Unison* appear to float free from the gallery walls like dissipating clouds or fading memories.

Process and uncertainty are crucial to Holly Cahill's practice, which she approaches as a puzzle that has many potential outcomes. By combining various methods of painting, fibers, sculpture, drawing, collage and print, she invites chance and repetition into her work as a way of loosening her grip on how it ultimately unfolds. She draws inspiration from the shared spaces we inhabit, as well as the traditions

that we pass down from generation-to-generation such as quiltmaking. Rather than referencing any single place, Cahill's sewn canvases, layered collages, and paintings featuring illuminated marks point to patterns drawn from both the natural and artificial worlds. The emergence of systems, and their eventual collapse, are central to Cahill's art. In her *Diagram* series, patterns emerge from fields of color like road maps to nowhere before transforming into traces of light that fade away. Works from *Study of Thorns* grow out of the wall like vines seeking the sun, only to turn back onto themselves to become a thatch of abstract lines and watercolor brushstrokes.

One of Cahill's favorite architectural forms is the portal, which is typically depicted as a device or door that enables the body to pass from one space to another. She is particularly interested in combining this idea of a threshold that can bend the rules of time and space with its counterpart in our everyday experience. Cahill believes that doing so creates a space for us to consider the possibilities of what lies beyond our comprehension while we remain connected to what we see in front of us.

About Mayumi Lake

Mayumi Lake is a multidisciplinary artist born in Osaka, Japan on April 11, 1966. She has studied at the Skowhegan School of Painting and Sculpture in Maine and the Rhode Island School of Design in Providence. She received her BFA, with a focus in Photography and Filmmaking, and MFA in Photography, from the School of the Art Institute of Chicago. Her photography and installation work delves into childhood and pubescent dreams, phobias and dreams, and the legacy of our cultural traditions. Lake has exhibited nationally and internationally at Miyako Yoshinaga Gallery, Asia Society, Art in General, Artists Space, New York; Chicago Artists Coalition, Chicago; Midwest Museum of Contemporary Art, Carmel; Fotografie Forum International, Frankfurt; Cornelius Pleser Galerie, Munich; Galleria PaciArte, Brescia; FOTOAMERICA, Santiago; Witzenhausen Gallery, Amsterdam; O Gallery, Tokyo. She has published two monographs "Poo-Chi" and "One Picture Book #55: Ex Post Facto" from Nazraeli Press.

About Holly Cahill

Holly Cahill is a Chicago-based multidisciplinary artist working in painting, drawing, fibers, sculpture, print, and collage. Her abstractions weave together elements of the fantastic found at the heart of our domestic and shared environments. Holly's work has been shown at the Gaylord and Dorothy Donnelley Foundation, Chicago Artist Coalition, Heaven Gallery, Pennsylvania State University, DEMO Project, Reva and David Logan Center for the Arts, D Gallery, The Franklin, Hyde Park Art Center, and Walter Phillips Gallery, among others. She received her BFA from Syracuse University, an MFA from the University of Cincinnati, and has been an artist in residence at the Chicago Artist Coalition, Vermont Studio Center, 8550 Ohio, Banff Centre, Ox-Bow, and Spudnik Press Cooperative. Cahill is a member and the current Director in Chicago of Tiger Strikes Asteroid, an artist-run, non-profit, network of gallery spaces with locations in Chicago, New York, Los Angeles, Philadelphia, and Greenville.



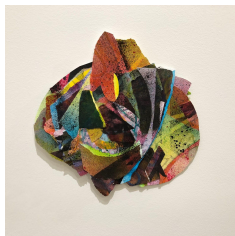
Holly Cahill

Intersections

2020

Acrylic and watercolor on canvas

57" x 68"



Holly Cahill

Study of Thorns (City)

2018

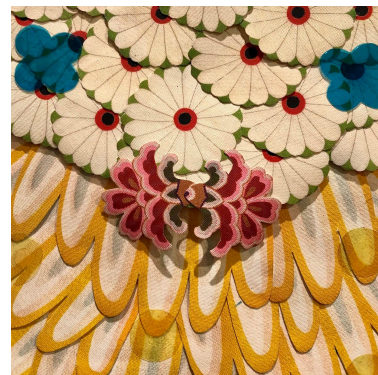
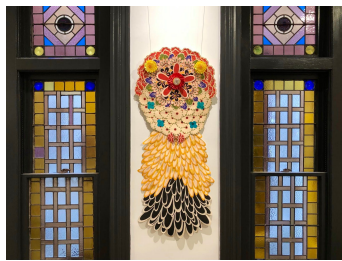
Ink, graphite, and watercolor on paper

10" x 10.25"



Holly Cahill
Sticky Geometries
 2018

Watercolor, ink and graphite on paper
 22.5" x 22.5"



Mayumi Lake
Unison (Fermata)
 2020

Pigment print on canvas, lighting gels, ribbon, felt and wood
 20 x 35



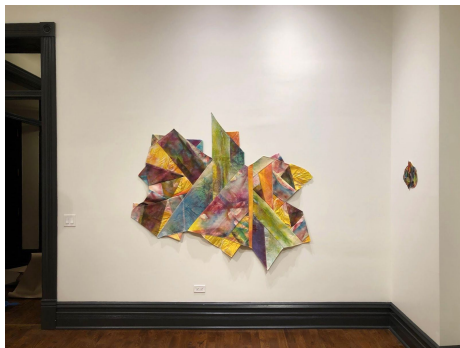
Mayumi Lake
Unison (Nimbus)

2019

Pigment print on Canvas and backlit film, plastic, gold leaf and wood
Dimensions variable

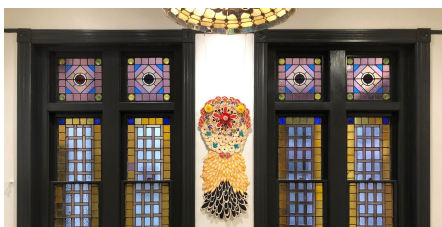
Mayumi Lake
Unison (Nimbus) detail

Installation Shots:



Holly Cahill
Intersections

Holly Cahill
Study of Thorns (City)

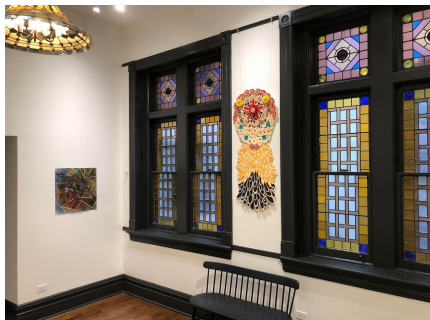


Mayumi Lake
Unison (Fermata)



Mayumi Lake
Unison (Fermata)

Unison (Nimbus)



Holly Cahill

Sticky Geometries

Mayumi Lake

Unison (Fermata)