



**EPIPHANY**  
CENTER FOR THE ARTS

## **Epiphany Suites**

**Luxury and exclusivity in sports entertainment watch parties**

# EPIPHANY

CENTER FOR THE ARTS

## WELCOME TO EPIPHANY SUITES

An historic venue, plethora of food and beverage options, and multiple suites, makes your time at EPIPHANY a truly unique and enjoyable experience.

Whether you are looking for game-day appetizers or an elegant, full-service dining experience, you can count on EPIPHANY to deliver every time.

Our menus showcase a variety of delicious packages for easy ordering or you can build your own menu with our a la carte items.

We take pride in our outstanding quality foods, exceptional service, and tasteful presentation.

We look forward to providing you with an enjoyable and memorable experience. Thank you for allowing us to serve you!



# EPIPHANY SUITES

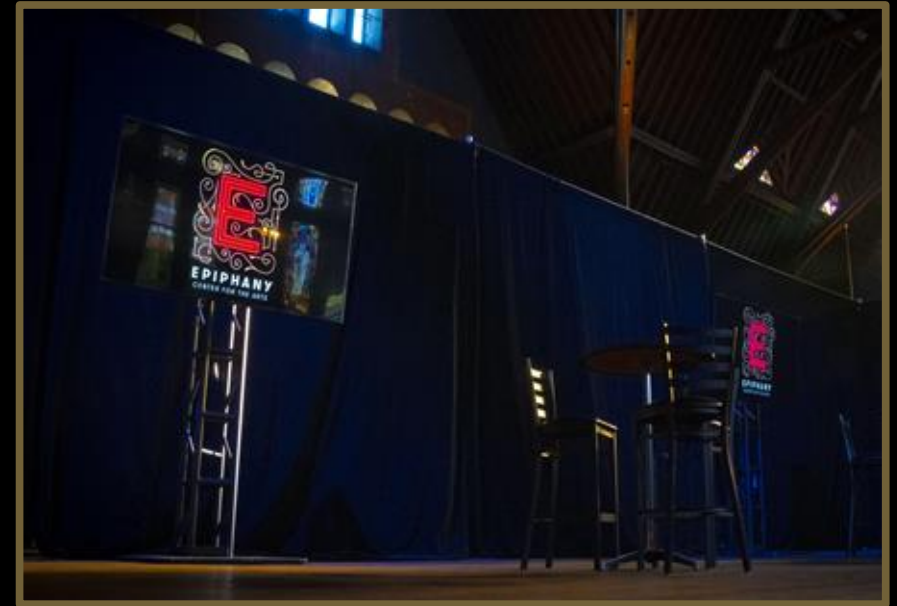
## Sports Entertainment Watch Parties

**With stadiums closed to fans and limited occupancy in bars and restaurants, Epiphany is perfectly poised to become Chicago's favorite sports entertainment destination.**

**Epiphany Suites offers an exclusive sports entertainment experience designed with corporate hospitality in mind.**

**Treat your clients to all the amenities of an in-stadium luxury suite in the privacy of their own COVID-Safe environment.**

**Each suite is strategically positioned throughout the 42,000-sf campus. With state-of-the-art fresh air controls, exclusive and secure entrances, and ample room to enable social distancing, Epiphany Suites offer a comfortable and exciting environment to cheer on your favorite sports team.**



# EPIPHANY SUITES

## First Class Amenities

**With twelve available suites, Epiphany offers an exclusive and private setting for your group. Each suite includes:**

- **Enormous 75” flat screen TV’s in each suite**
- **Food and beverage service available throughout the game**
- **Professional audio, lighting and video production**
- **Pre/post game entertainment: Live Music, DJ or Tailgate**
- **Livestream capabilities for on/off campus entertainment**
- **Custom designed COVID-Safe seating configurations**

**- EPIPHANY does COVID-Safe -**





# EPIPHANY SUITES

## Culinary Excellence

**Whatever your food preference, Epiphany's Menu offers flexible options with small and large entrées, vegetarian options and gourmet foods throughout.**

**We work with partners who care about quality just as much as we do and make every effort to cook with only the finest ingredients.**

**Whether it be a Sunday night watch party, or afternoon drinks with friends, come to Epiphany Suites and enjoy the best Chicago has to offer.**

**Epiphany Suites has a variety of customized options for your next event, offering both private and semi-private and event space.**



# Menu – Suites

## Standard Food & Beverage Offering (for 10)

### Food Package

Snack	Popcorn, Pretzel Sticks or Chips/Salsa/Guacamole
Salad or Platter	Seasonal Crudité, Fruit Platters, Garden or Chopped Salad
Appetizer	Chicken Tenders or Chicken Quesadilla

### Entree (choose one)

Fried Chicken, Pork BBQ Wings, Fries  
Pulled Chicken or Cheeseburger Sliders and Spare-Ribs  
Italian Package (TBD)  
Mac n. Cheese and Fries included with each package

### Sweets

Cookies, Brownies or Cupcakes

### Beverage Package

Beer/Wine	1 case + 4 bottles
Bloody Mary Package	1 bottle + fixings (Antipasti Skewer extra)
Non-Alcohol	12 pack soda or water

Food and Beverage upgrades, including bottle service available upon request



# Menu – General Admission

## Standard Food & Beverage Offering (for 4+)

### Food Package

Popcorn, Pretzel Sticks and Chips/Salsa/Guacamole  
BBQ Wings and Cheeseburger Sliders  
Mac n. Cheese and Fries  
Cookies

### Beverage Package

Domestic Bundle (combination of 3-six packs)  
Non-Alcoholic (choice of water or soda – 8)

Food and Beverage upgrades, including bottle service available upon request





# EPIPHANY Suites Football Schedule

## Bears & NFL Night Game Schedule

### - Sunday Schedule -

<u>Tailgate</u>	<u>Kick-off Time</u>	<u>Closing Time</u>
10:30 AM	Bears Game 12:00 PM Second Game 3:25 PM	End 2 <sup>nd</sup> Game

### - Sunday, Monday & Thursday Night Schedule -

<u>Tailgate</u>	<u>Kick-off Time</u>	<u>Closing Time</u>
5:45 PM	7:15 PM	11:00 PM

- Café Bar open from 5 PM – 11 PM for evening games -

## College Football Schedule

### - College Day Games -

<u>Pre-Game</u>	<u>Game Time</u>	<u>Closing Time</u>
10:00 AM	11:00 AM	6:00 PM

### - College Night Games -

<u>Pre-Game</u>	<u>Game Time</u>	<u>Closing Time</u>
6:00 PM	6:30 PM	11:00 PM

- Café Bar open from 5 PM – 11 PM for evening games -





# EPIPHANY

CENTER FOR THE ARTS

## Epiphany Suites (private rental)

### Chicago Bears Games & World Series

<u>Suites</u>	<u>Occupancy</u>	<u>Suite Rental</u>
The Sanctuary	25	\$ 7,500
Epiphany – 1	15	\$ 4,500
Epiphany – 2	10	\$ 3,000
VIP Suite	10	\$ 3,000
Catacombs	15	\$ 3,000
Chase House – 1	10	\$ 2,500
Chase House – 2	15	\$ 3,750

### Sunday, Monday & Thursday Night Football and NCAA College Games

<u>Suite Rental</u>
\$ 5,000
\$ 3,375
\$ 2,250
\$ 2,250
\$ 2,250
\$ 2,000
\$ 3,000

### General Admission

Courtyard/Terrace \$90 per person, groups of 4+ allowed (opening subject to a minimum sell-out of 50 people)

Suite rental includes a standard food and beverage package a \$125 value per person based on suite occupancy listed above

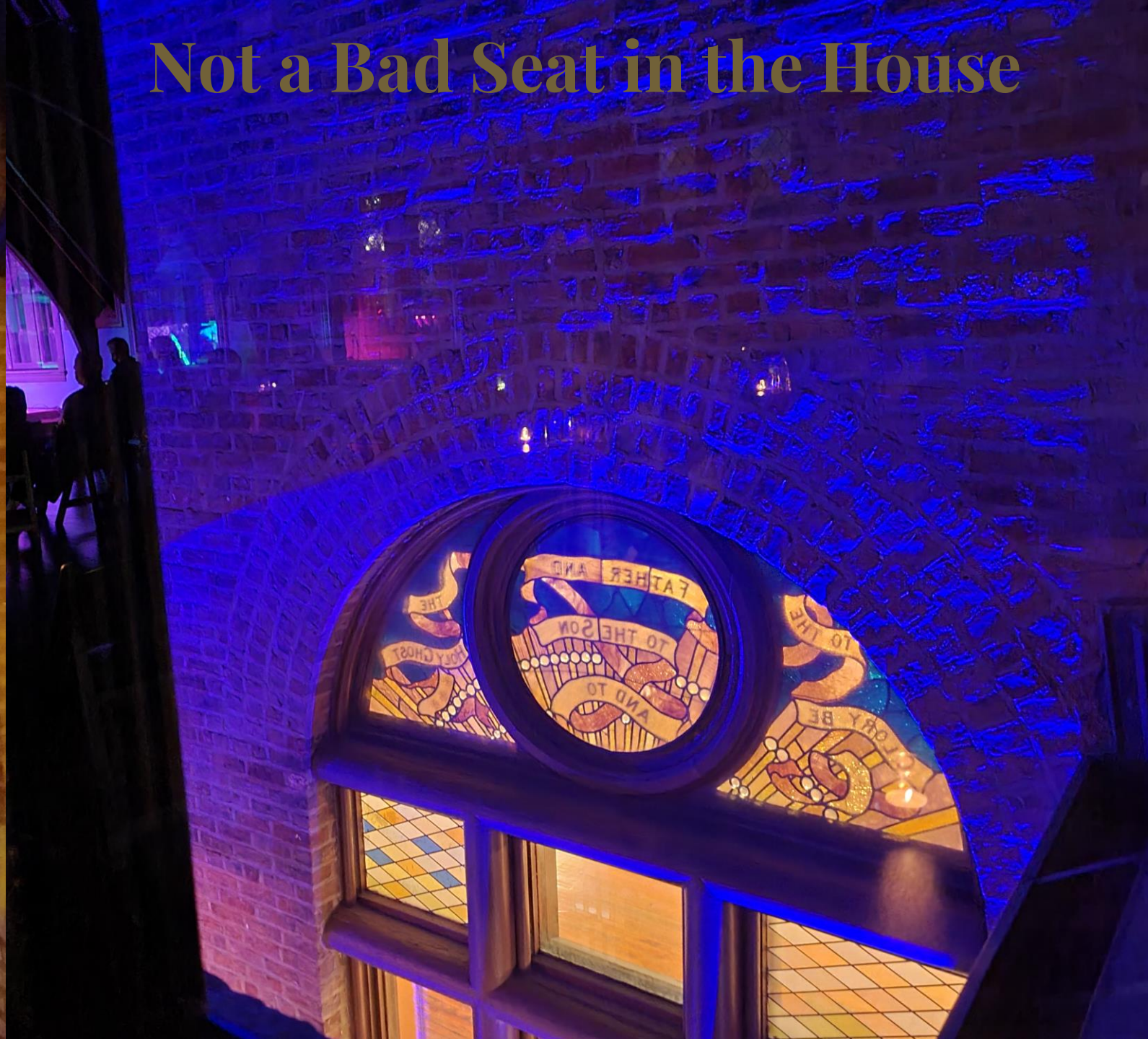
*\*Pricing excludes 18% service fee and taxes*











Not a Bad Seat in the House



# Epiphany Hall

Epiphany Hall is breathtaking... a spectacular 50-foot cathedral ceiling and arched trusses allow for column free expansive space. Guest of the luxury suites can experience the dramatic decorative terra cotta tiles, Venetian glass mosaics, and original stained-glass windows of the former church.

Watch the games on two enormous 75" screens enhanced by Epiphany's phenomenal D&B audio system, while enjoying in-suite food and beverage service from a shared valet. Prepare to be knocked off your feet by our high-tech multimedia light and sound show!

Suites One and Two each accommodate fifteen (15) guests and have a view of the enormous 16' x 20' screen and live music stage. Suites Three and Four are equally exciting, each accommodating ten (10) guests, with live music performances streamed to the TV's.

Packages from \$200 - \$300 per person based on full occupant load.



















# FIRST FLOOR

|||||  
PIPE AND DRAPE BARRIER

EPIPHANY CENTER FOR THE ARTS  
201 S ASHLAND AVE  
CHICAGO, IL 60607  
312.421.4600  
INFO@EPIPHANYCHL.COM  
EPIPHANYCHL.COM



**EPIPHANY HALL**  
OCCUPANT LOAD:  
**897**  
COVID SAFE  
OCCUPANCY:  
**50** (5.5%)



**CHASE HOUSE**  
OCCUPANT LOAD:  
**340**  
COVID SAFE  
OCCUPANCY:  
**50** (14.7%)





# Chase House

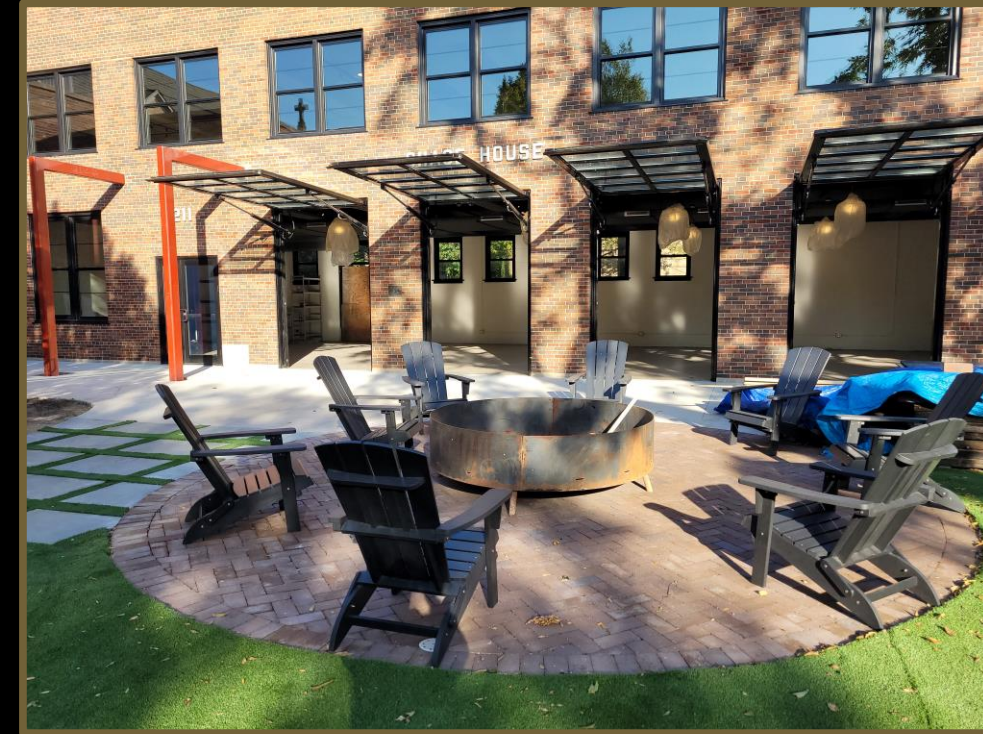
## ARE YOU READY TO TAILGATE!?

This amazing indoor/outdoor loft-style bar scene has five massive doors opening to an outdoor patio complete with firepit and Adirondack chairs. Overlooking Epiphany's exclusive courtyard and terrace you are steps away from the action in our café bar!

The Chase House can accommodate groups as small as four (4), two suites of twenty-five (25) or a full room buyout of fifty (50). With many of the amenities of a private in-suite experience, you and your friends can watch the game on four 75" flat screens and a massive 6' x 16' screen while listening on a QSC audio system. And, live music and DJ beats will be streamed in as well!!

To up your game, be sure to ask about Epiphany's showcase kitchen and artisan chef experience to up your food and beverage game.

Packages start at \$90 per person, minimum of four required.











CHASE HOUSE

211





CHASE HOUSE



# The Catacombs

**Hidden beneath Epiphany Hall and surrounded by original stone foundation walls, brick columns and heavy timber beams, hear Chicago's finest House Music spun by a live DJ during halftime and post-game festivities.**

**Each suite accommodates ten (10), includes one 75" flat screen TV, D&B audio and customizable lighting on every column enabling you to create your own unique atmosphere while cheering on your favorite team.**

**Food and beverage are served in a spacious common area complete with socially distanced tables, chairs and another 75" screen so you won't miss a beat when piling on seconds!**

**Packages from \$150 - \$200 per person based on full occupancy.**

















ADAMS STREET

## CATACOMBS

|||||  
PIPE AND DRAPE BARRIER

### THE CATACOMBS

OCCUPANT LOAD:  
**229**

COVID SAFE  
OCCUPANCY:  
**50** (21.8%)



NORTH



ASHLAND AVENUE



EPIPHANY CENTER FOR THE ARTS

201 S ASHLAND AVE  
CHICAGO, IL 60607  
312.421.4600  
INFO@EPIPHANYCHI.COM

EPIPHANYCHI.COM



# The Sanctuary

**Exclusivity with old-world charm is why this is a premium corporate suite!**

**Offered to accommodate twenty-five (25) guests, there is ample room to upgrade to thirty-five (35). Complete with a private niche bar, exclusive restrooms and spacious lounge, service is #1 with two in-suite valets.**

**Watch on two enormous 75” screens and listen on Epiphany’s phenomenal QSC audio system and choose to have either live music or DJ beats streamed in!**

**For a truly VIP experience Epiphany’s Director of Entertainment, Mike Jeffers, will work with you to customize a live music performance for you and your guests creating a one-of-a-kind atmosphere for your game day party!**

**Packages from \$250 - \$300 per person based on full occupancy.**













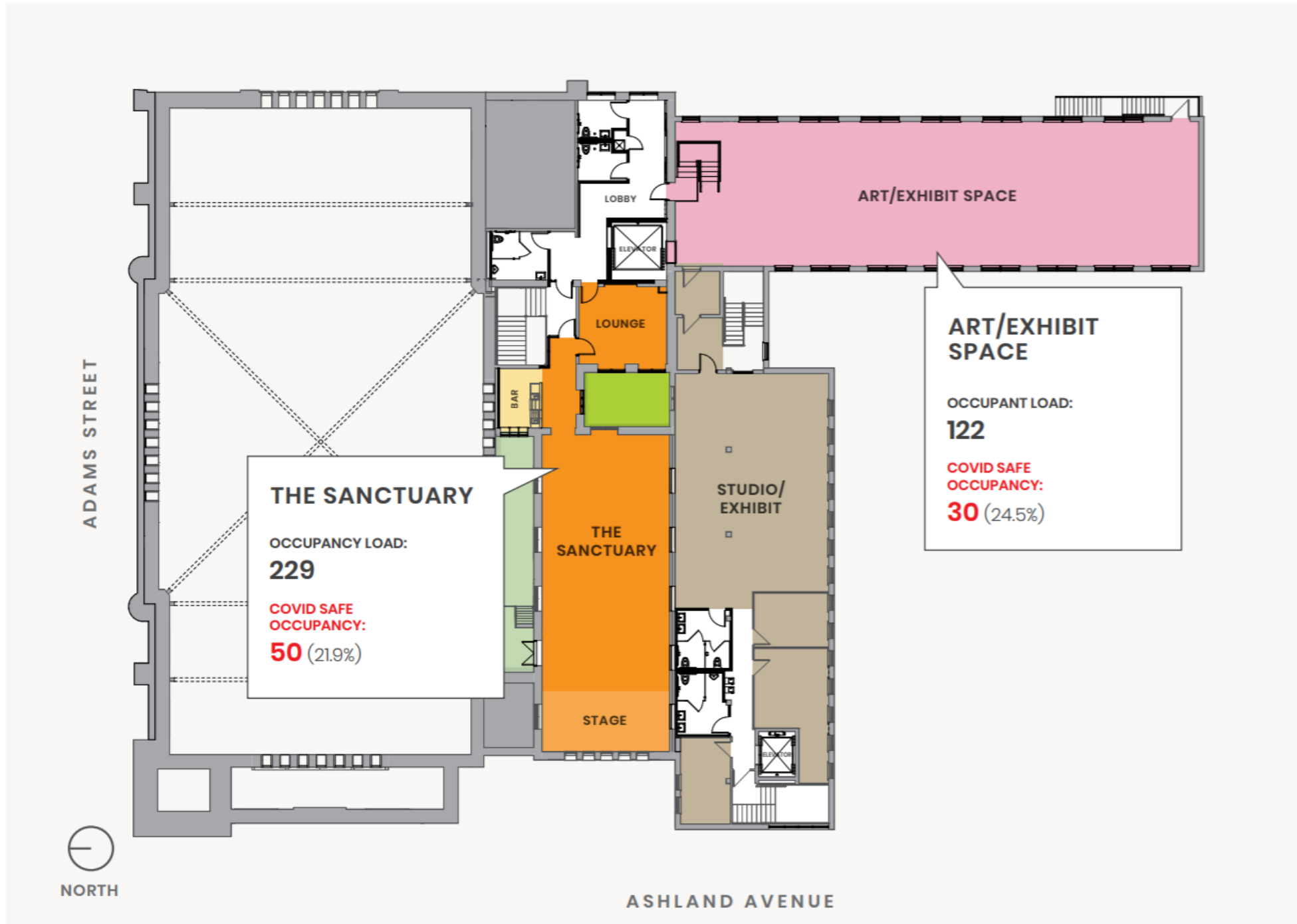


## SECOND FLOOR

EPIPHANY CENTER FOR THE ARTS

201 S ASHLAND AVE  
CHICAGO, IL 60607  
312.421.4600  
INFO@EPIPHANYCHI.COM

EPIPHANYCHI.COM





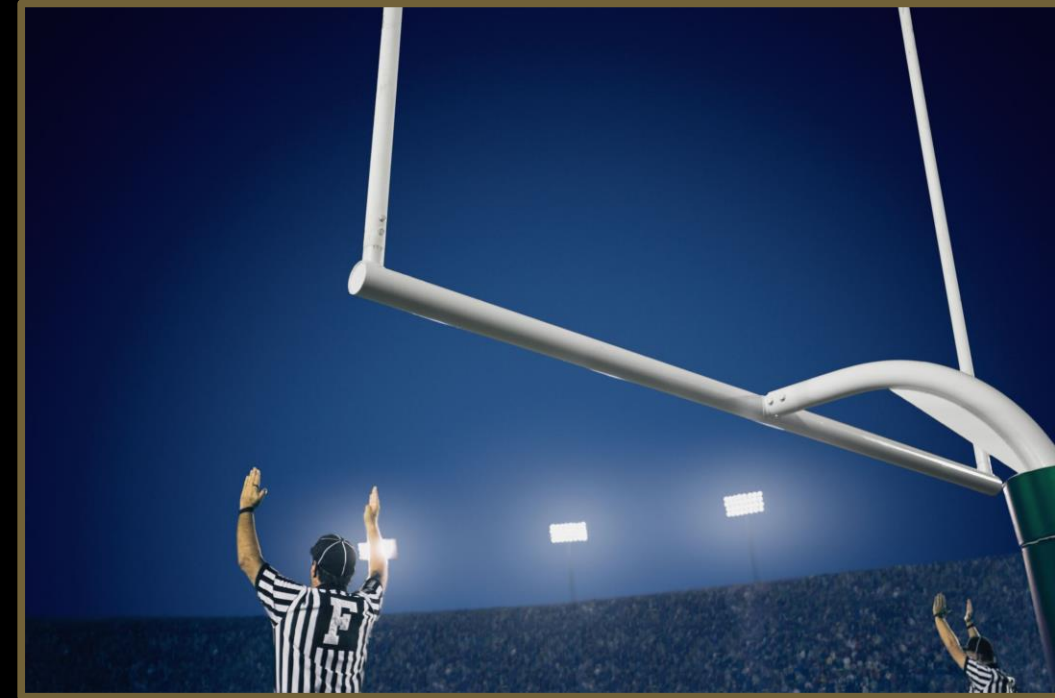
# V.I.P. Suite

Need we say more... privacy and exclusivity with the same old-  
charm attributes of The Catacombs... original stone foundation  
walls, brick columns and heavy timber beams, plus a private bar,  
restroom, three flat screen TV's and a private, in suite valet. And,  
you can choose to have either live music or DJ beats streamed in!

The VIP Suite offer is for ten (10) but can be upgraded to fifteen  
(15).

Packages from \$225 - \$300 per person based on full occupancy.

Under construction, available October 30<sup>th</sup>.





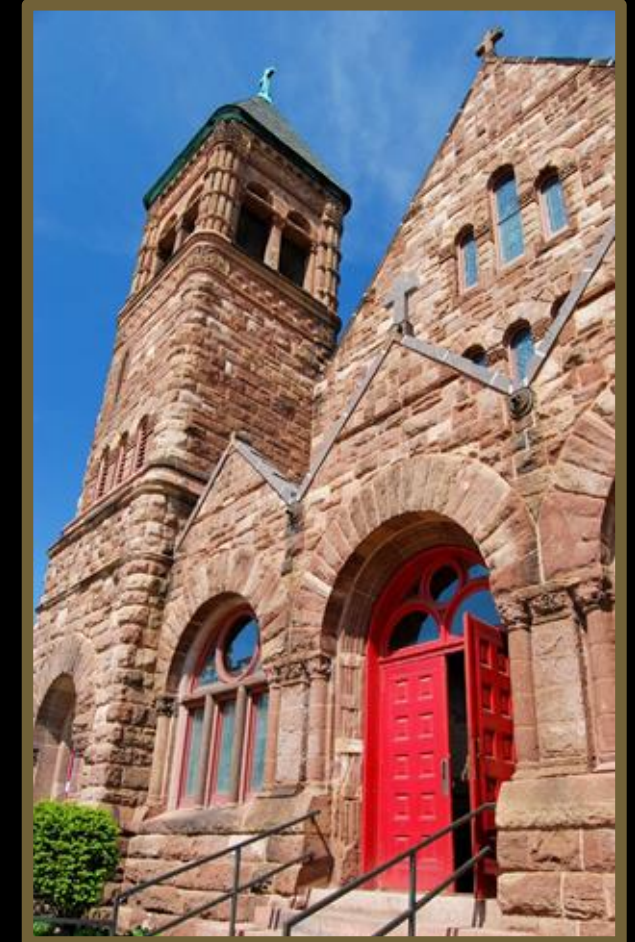
# EPIPHANY Does COVID-Safe

**At EPIPHANY, we are taking every COVID precaution very seriously. Our number one concern is the health and wellness of our guests and staff while safely using our suites.**

**EPIPHANY's Infection Mitigation Coordinator developed and manages our COVID-Safe protocols and guidelines. They are designed to create a safe and comfortable environment for all fans attending our events.**

## **EPIPHANY Center For The Arts COVID-Safe Procedures And Guidelines:**

- **Thermographic temperature checks upon entrance**
- **CDC standard cleaning procedures before and after each show**
- **Requiring masks are worn in all common areas**
- **Proper social distancing spacing for patrons and staff**
- **PPE on all staff throughout the EPIPHANY Center For The Arts campus**







EPIPHANY  
CENTER FOR THE ARTS



EPIPHANY  
CENTER FOR THE ARTS











# Contact Us



**epiphanyarts201**  
Epiphany Center for the Arts



**ALLEN ROBINSON**  
**WHAT'S NOW**  
The Bears wide receiver scored a touchdown in Chicago's last game of 2018, and set two franchise records (10 receptions, tied with Matt Forte, for 143 yards)—a big bright spot in a season that ended too soon.  
**WHAT'S NEXT**  
Playing an even bigger role in the team's momentum next year, and continuing to build his Within Reach Foundation, which helps promote literacy.  
"Even off the injury I had [Robinson set out the 2017 campaign] and play a full season was big. I tell you all the time. When you say you love the game of football, when you say the game means as much to you as some games, all that is going to be tested. When you go through an injury like that, you have to look at the plan as always. And positivity creates many more outcomes. If he able to have an impact—that's what I try to bring to the table. I established the Within Reach Foundation [Robinson's 12-year-old son] a few years ago. We have a goal, and I don't want you to think. The reason I want to do it is to create reading rooms in Chicago Public Schools, to give kids a place where they feel comfortable, and to give them confidence. I think anybody with confidence is a dangerous person." —*ES*



 Liked by rachalkimberly and 62 others

**epiphanyarts201** @chicagobears wide receiver @allenrobinson12 is at Epiphany Center for the Arts and is one of the MEN ON THE MOVE featured in The Men's Book #Chicago continuing to build his @allenrobinsonfdn Within Reach Charitable #Foundation which helps

**epiphanyarts201**  
Epiphany Center for the Arts





 Liked by rachalkimberly and 41 others

**epiphanyarts201** #TBT Kudos to @modernluxury for highlightin... more rachalkimberly #chicagobears

September 26, 2019







**EPIPHANY**

CENTER FOR THE ARTS

*Epiphany Suites*